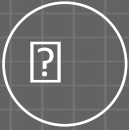


# *Company Profile*

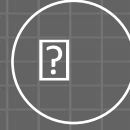


---

OMNI DOT COM LTD. – GEOSPATIAL INFORMATION | SOFTWARE DEVELOPMENT | DATA SOLUTIONS



GEOSPATIAL SOLUTIONS AND SERVICES



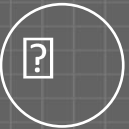
SURVEYS AND DATA CAPTURE



INFORMATION SYSTEM AND SOFTWARE  
DEVELOPMENT



CONSULTING SERVICES



DATA PROCESSING AND DATABASE  
MANAGEMENT AND GIS DATA SETS

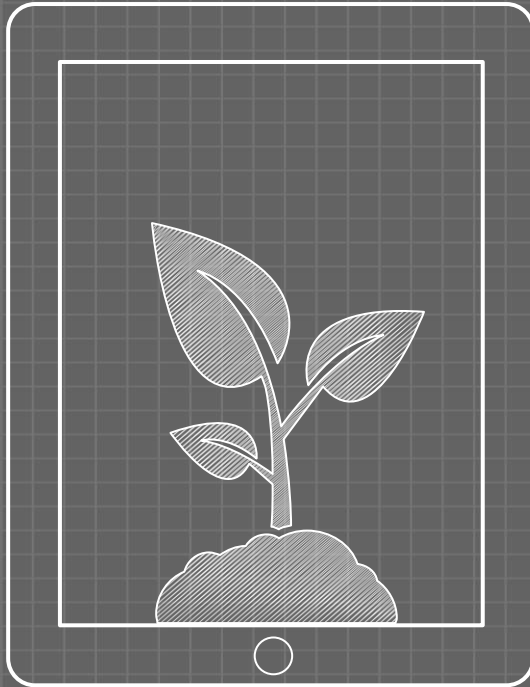


Geo-Spatial Re-Seller



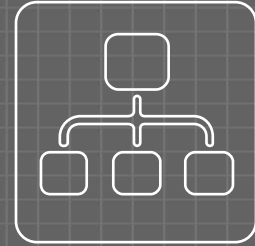
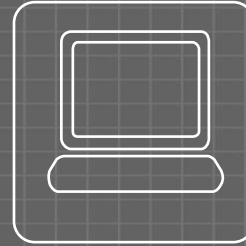
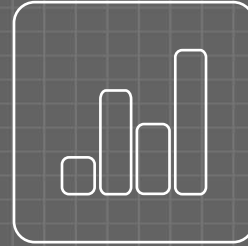
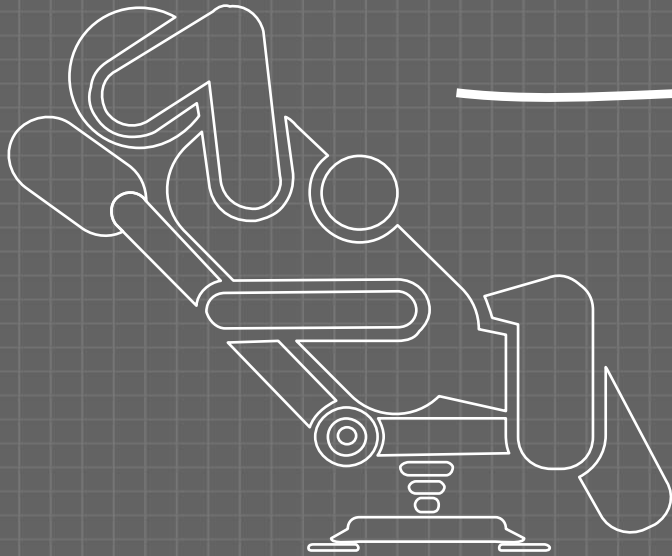
- *Ownership Records and GIS Based Land Information Systems*
- *Irrigation*
- *Water and Sanitation*
- *Pipeline Transportation Routing*
- *Right of Way Acquisition & Permitting*
- *Public Health Engineering*
- *Electrical Engineering*
- *Environment Impact & Management Plan*
- *Town Planning & Urban Development*
- *LiDAR and Remote Sensing*
- *Hydrographic Surveys*
- *Photogrammetry,*
- *Airborne and Ground Geophysical Surveys*
- *Route Planning,*
- *Terrain Evaluation and Geological Appraisal*
- *Ground Water and Resistivity Surveys*
- *Underground Utility Detection (GPR)*





- *Integrated Digital Land Registration System*
- *Deed Registration System*
- *Bangladesh Railway Land Information System*
- *Reaching Out-of-School Children Monitoring System*
- *Accident Management System*
- *Electricity Network Management System*
- *WATSAN Information System*
- *Ground Water Monitoring System*
- *Water Billing Management*





### Textual

- *Farmer Database*
- *Small Water Irrigation Database*
- *National WATSAN Database*
- *Agro-ecological Database*

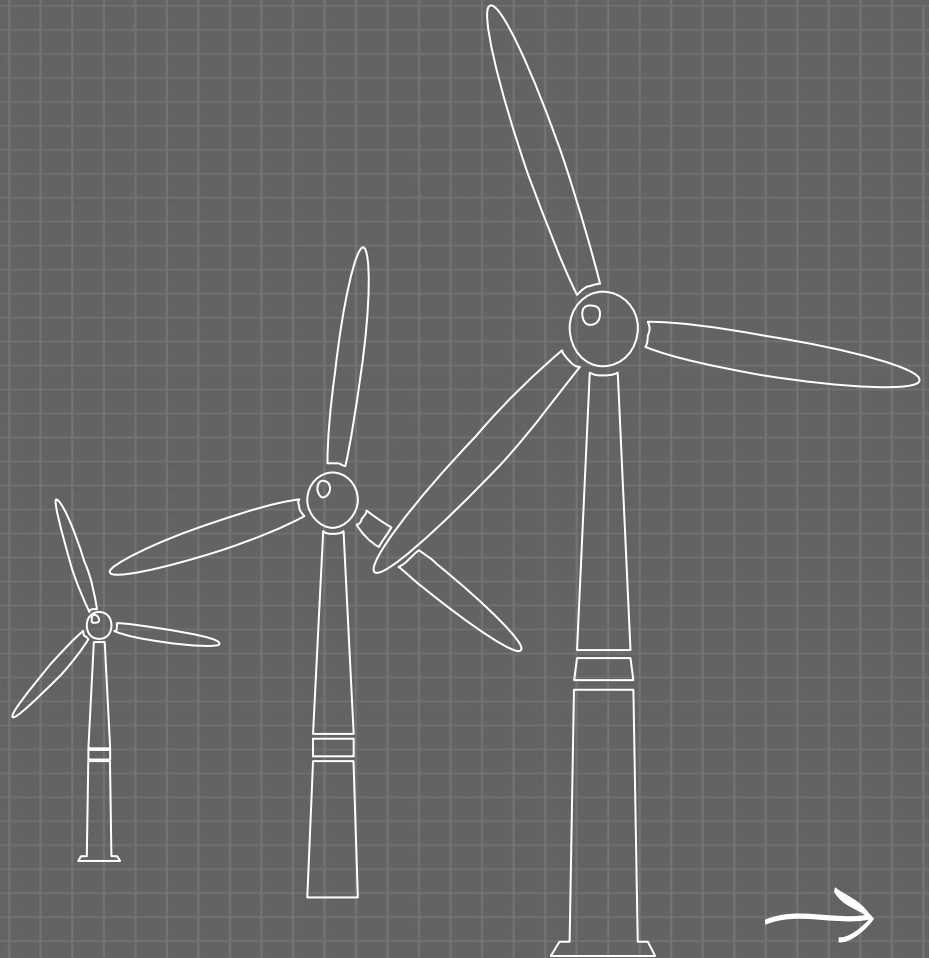
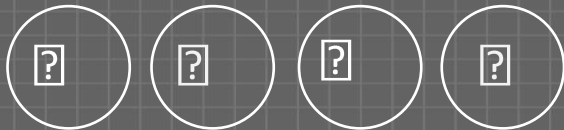
### Spatial

- *Administrative Boundary*
- *Division*
- *District*
- *Upzila*
- *Union*
- *Mauza*
- *Ward*
- *Road Network*
- *River Network*
- *Water bodies*
- *Rail Network*
- *Settlement*
- *Forest*
- *Growth Centers*
- *Head Quarters etc*



## SURVEYS AND DATA CAPTURE

- *Photogrammetry, LiDAR and Remote Sensing*
- *Engineering, Property and Hydrographic Surveys •*
- *Geotech (Soil) Investigation and Foundation Engineering*
- *Airborne and Ground Geophysical Surveys*
- *Route Planning, 3D Corridor Mapping and GIS Database*
- *Terrain Evaluation and Geological Appraisal*
- *Ground Water and Resistivity Surveys*
- *Underwater Leak Detection and Turnkey Solutions for*
- *Dams and Underwater Structures*
- *Underground Utility Detection (GPR)*



01

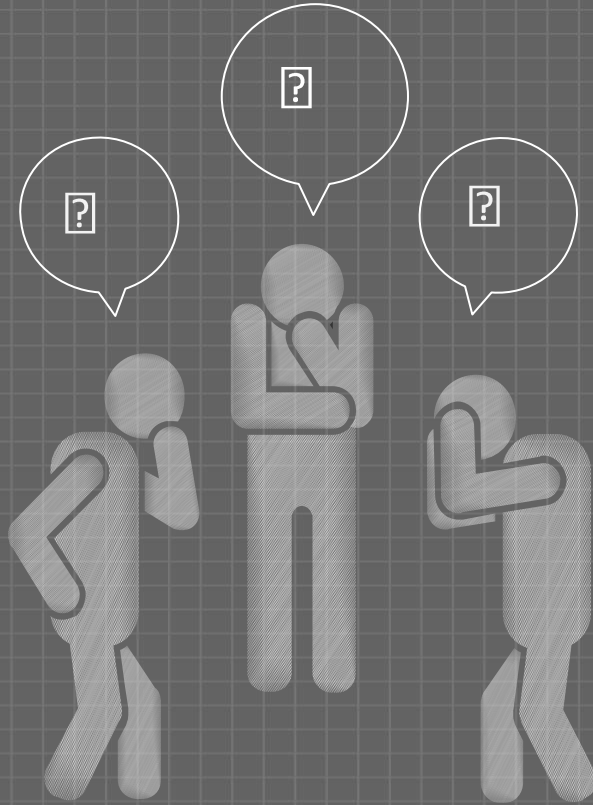
*Multidiscipline  
Engineering  
Consultancy.*

02

*Town Planning and  
Urban Development .*

03

*Electrical  
Engineering.*



*Irrigation, Flood  
Control and Water  
Management*

04

*Environment Impact  
and Management Plan*

05

*Irrigation, Flood  
Control and Water  
Management*

06



## Geo-Spatial Re-Seller

01



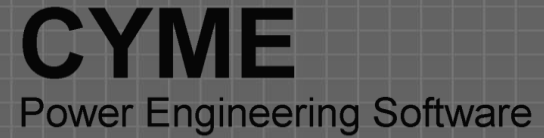
04



02



05



03

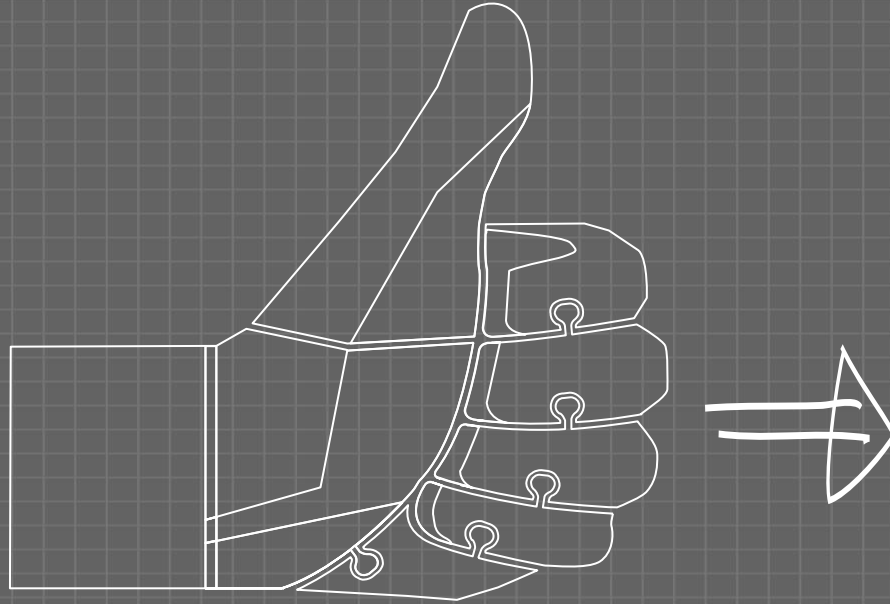


06





Existing Clients



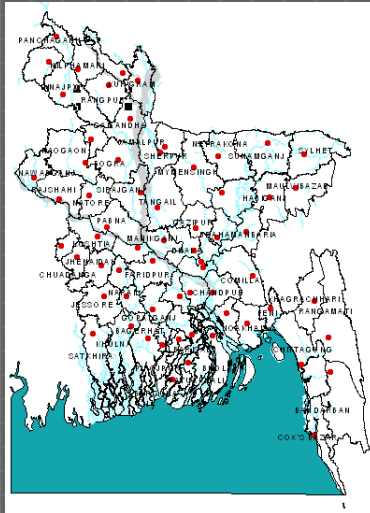
LGED, UDD, DSS  
 PLANNING DIVISION  
 FOREST DEPARTMENT  
 National Academy for  
 Primary Education (NAPE)



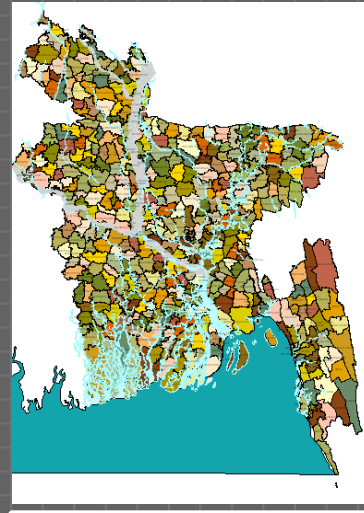
## Digital Map Layers



- **Administrative Boundary**
  - Division
  - District
  - Upzila
  - Union
  - Mauza
  - Ward
- **Road Network**
- **River Network**
- **Water bodies Rail Network**
- **Rail Network**
- **Settlement**
- **Forest**
- **Growth Centers**
- **Head Quarters etc**



DISTRICT

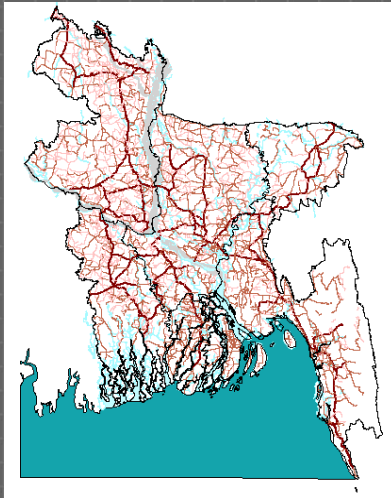


UPAZILA

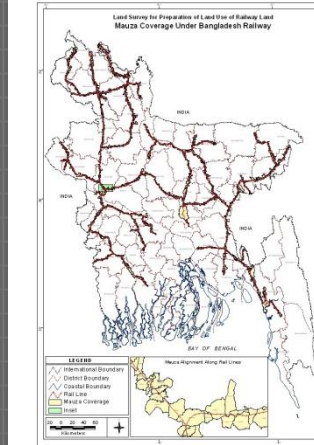


UPTO MAUZA

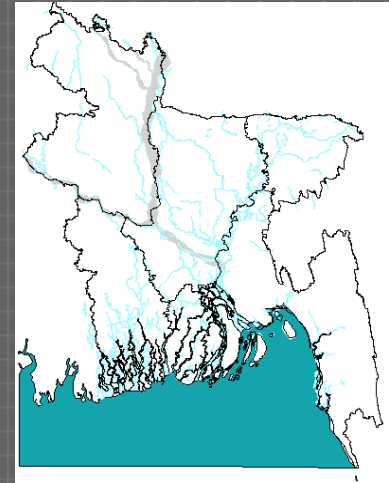




Road Network

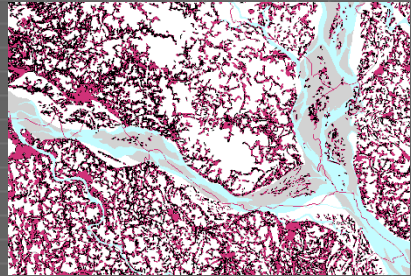


Railway

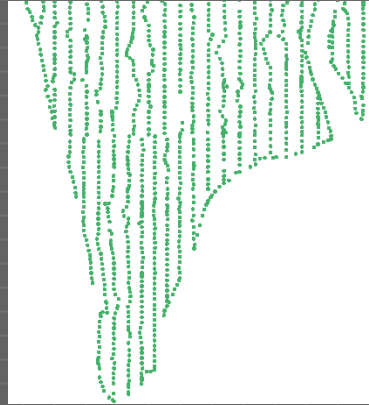


River

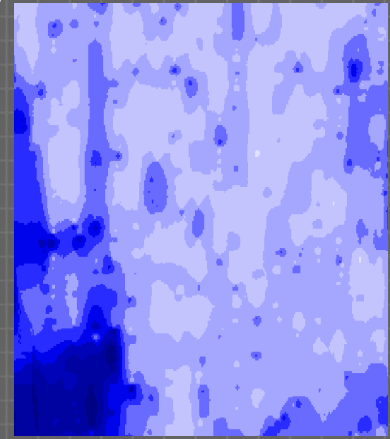




SETTLEMENT



SPOT HEIGHT



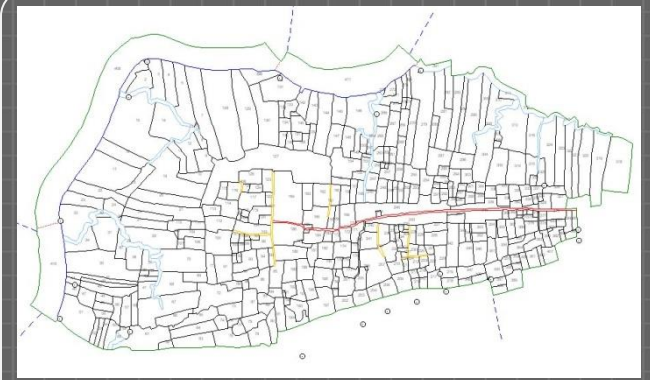
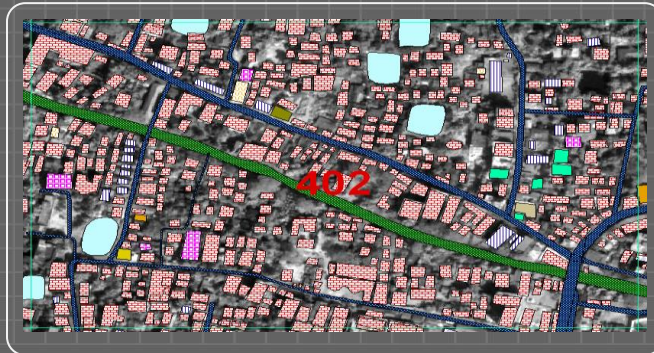
DEM







Household Level City Maps



Parcel Level Digital Map

## MEET OUR TEAM



**MOSTAQUE AHAMED**  
Managing  
Director

*MSC in Applied  
Mathematics*



**SHAMIM HASAN**  
Chairman

*MSC in Statistics  
MSC in Computer  
Science and  
Engineering.  
MCSD*



**ZAKIR HOSSAIN**  
Director

*MSC in Computer  
Science and  
Engineering.  
MCA.*





# Thanks & Bye

